

# ISYNERGY WORKFLOW

Automating Business Processes

## Elimination of Tasks

Inefficiencies, redundant tasks, delays, lost documents, lack of control, poor quality and countless other issues exist within your current business processes. You know there has to be a better way. You have a vision of a new and automated process that integrates the departments and systems of your company. Your vision is clear; let iDatix make it happen.

## Improved Productivity

## Reduced Overhead & Facility Costs

Progression is a total Business Automation tool that seamlessly integrates all of your business operations and systems, completely eliminating and reducing manual business tasks and activity. Progression is the answer to your business questions and the path to implementing your corporate vision.

## Improved Turnaround

### Progression is a Solution for Any and All Departments

Accounting, HR, Finance, Customer Support, Sales, Claims, Underwriting, Processing, Manufacturing, Medical Management or any other. Progression provides an easy and rapid way to add workflow automation to any process and integrate it within any environment. Combining Progression with iSynergy® enterprise document management allows you to easily automate any key line-of-business application.

### Progression Interface

With an easy to use graphical user interface, you simply draw the business process to automate work tasks and integrate systems. Progression is an effective tool for approval processes, controlled processes, routing, tracking and adding security to the management of document processing. It can be used to distribute documents into parallel processes and wait for events to synchronize in the decision-making process.

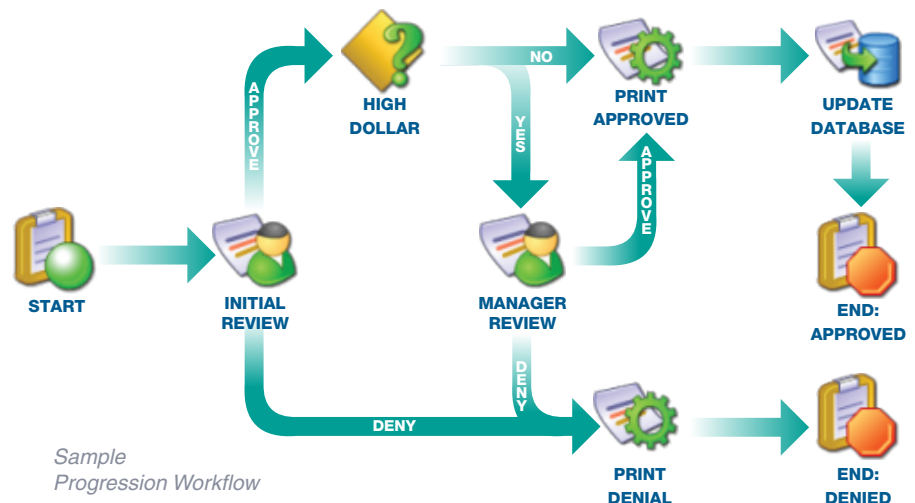
## Reduction of Risk

## Improved Quality

## Accountability & Audit Trails

## Reporting & Performance Metrics

## Disparate Systems Integration



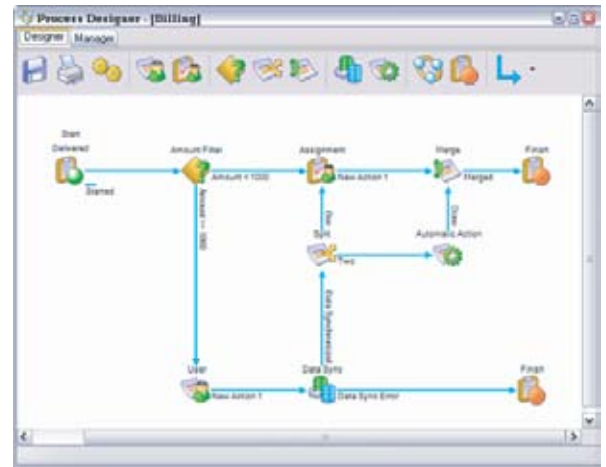
Sample Progression Workflow

Progression follows industry standards as set by the Workflow Management Coalition and is designed to allow business project managers, internal IT staff and consultants to have the ability to define business processes within Progression. With a simple point-and-click interface, the business process designer draws the processes and defines the rules. Progression can also share data with iSynergy and other databases and applications, as well as start external processes and programs.

### The Progression Designer

Progression allows you to define Processes that contain Tasks. Tasks contain defined Actions for the user, as well as a description of the task and instructions or steps for completing a task. Tasks can be ordered and dependent on the completion of other tasks. A Task has the ability to have states defined and automatically move task items to the next step of the business process.

Any number of Processes can be defined, and each process can have a unique Start event derived from a specific state of a document contained in the iSynergy Solution or from an external database event. Progression also provides tools for data exchange and synchronization, as well as the ability to launch external programs and processes.



### Progression and iSynergy

Progression automatically implements new automated business process within iSynergy. Tasks defined in the Progression designer are configured in the browser environment of iSynergy. They appear as a list of available tasks for users assigned to processing those tasks.

Tasks as viewed by the user include instructions for completing the task as well as buttons that represent the available Actions the user can take.

### The iDatix Difference

iDatix delivers technology that offers dramatic and measurable results. Our products immediately increase productivity, reduce costs and exceed expectations. iDatix is committed to delivering effective business solutions that have a measurable return for our clients.

iDatix: Simplifying the Workplace.